

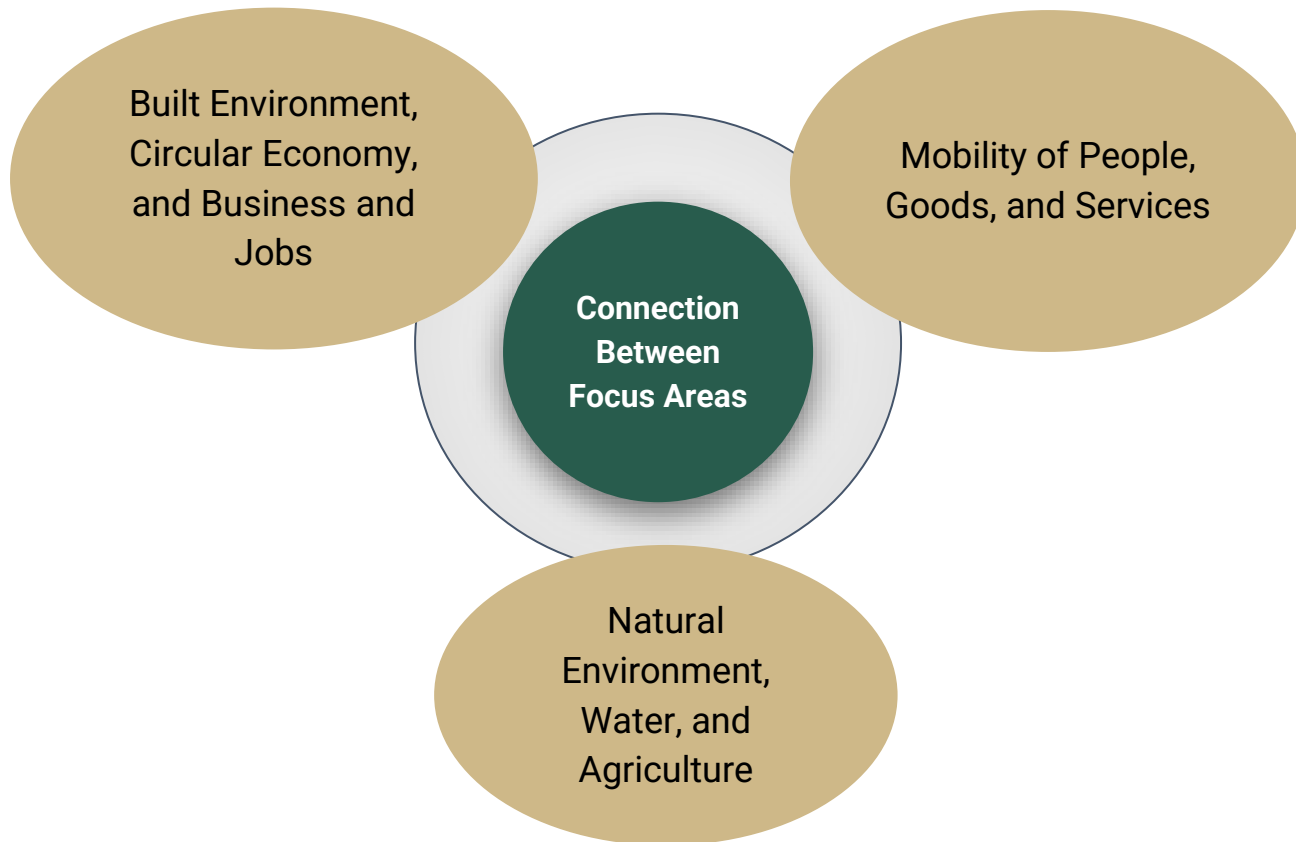
CLIMATE SMART  
FUTURE *Ready*



[www.larimer.gov/csfr](http://www.larimer.gov/csfr)

Heidi Pruess  
Manager, Office of Sustainability and Climate  
[pruesshb@co.larimer.co.us](mailto:pruesshb@co.larimer.co.us)  
970-498-7138

# FOCUS AREAS



## What is the County's Approach and Role?

- Zoom out and look beyond local government boundaries to what is happening in our County and region
- Consider sustainable (environmental, economic, and social) needs and impacts
- Discover gaps and overlaps
- Nurture and enhance partnerships
- Align priorities as much as possible

# Partners Making It Happen!!



# LARIMER COUNTY NATURAL RESOURCES



## Land Conservation as a Critical Climate Strategy



# LARIMER COUNTY CLIMATE STRATEGY

## Climate Smart Future Ready

- 9 key sectors (policy, transportation, business, connectivity, agriculture, water, energy/buildings, economy, & natural environment)
- Natural Environment Action: Coordinate across jurisdictions to conserve lands to enhance ecological connectivity and improve community ecosystem services.
- Natural landscapes contribute to climate goals by:
  - Storing carbon dioxide from the atmosphere in healthy ecosystems.
  - Providing ecosystem services

## BACKGROUND

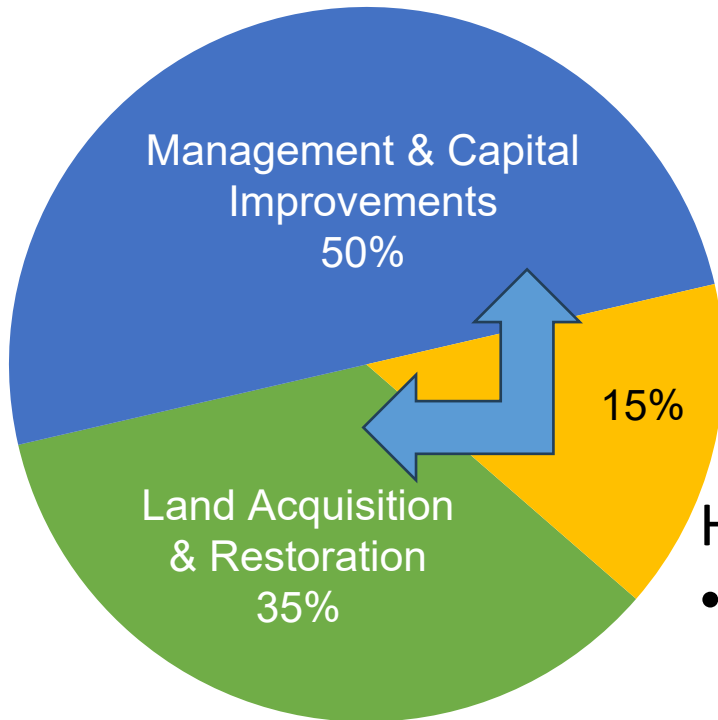
Mission: Connect People,  
Nature & Place

Vision: Healthy  
Landscapes, Healthy  
People

- Manage 18 open spaces for nature-based public access
- Hold over 50 conservation easements

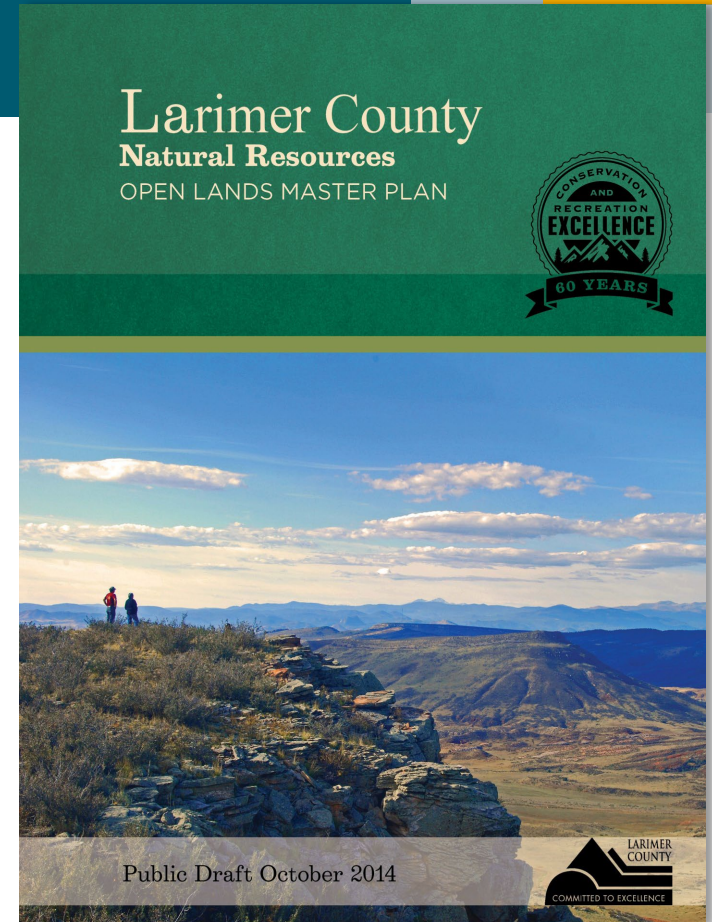


- Open Lands Master Plan
- Our Lands Our Future Survey
- Help Preserve Open Spaces ballot language



## Help Preserve Open Space Sales Tax

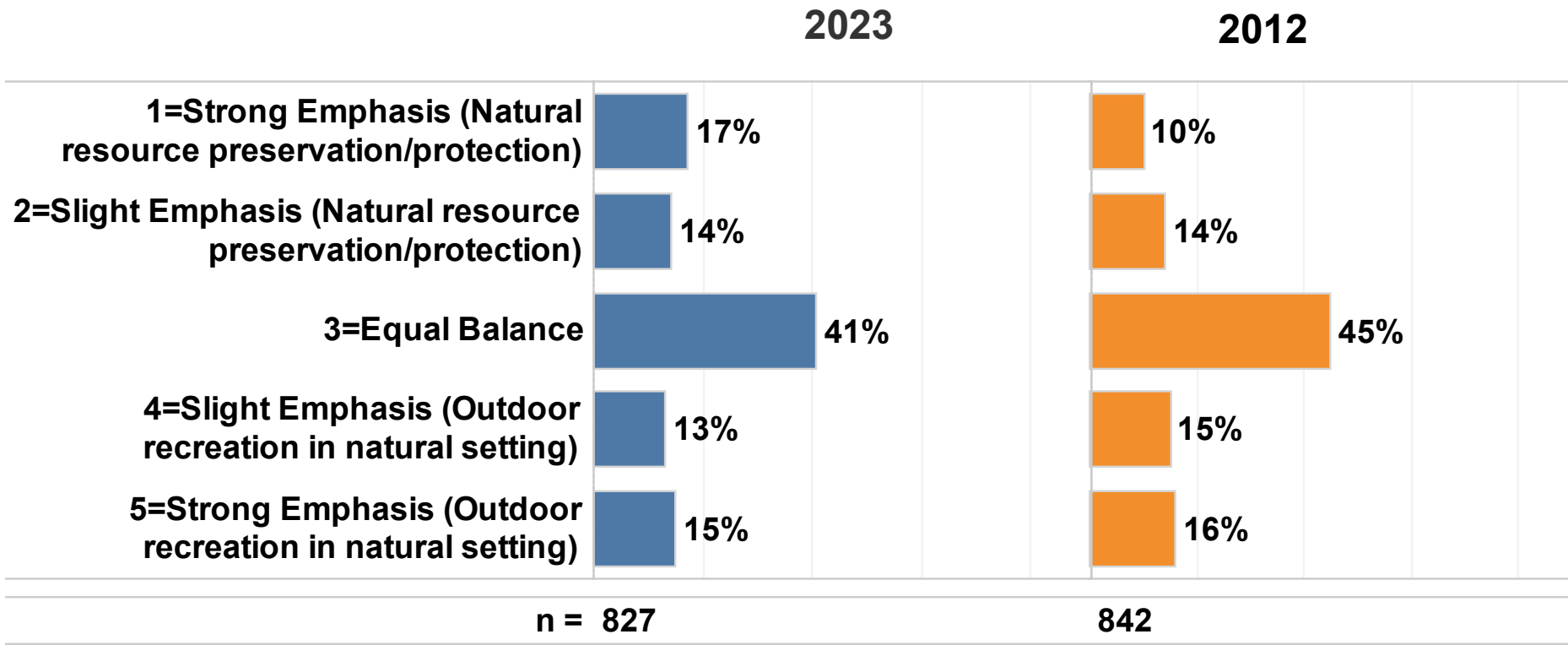
- 50% to Larimer County; 50% to municipalities

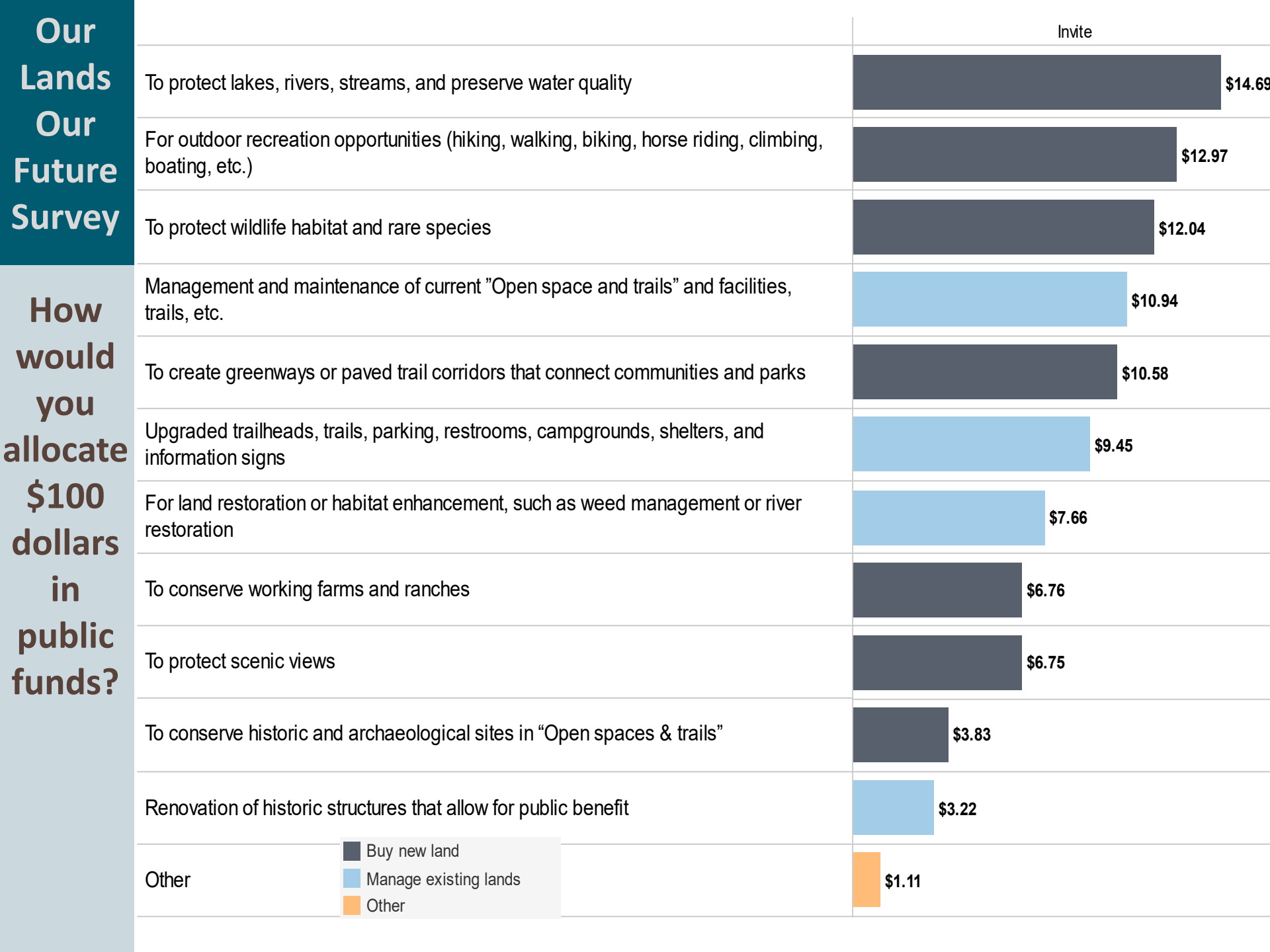




# OUR LANDS – OUR FUTURE SURVEY

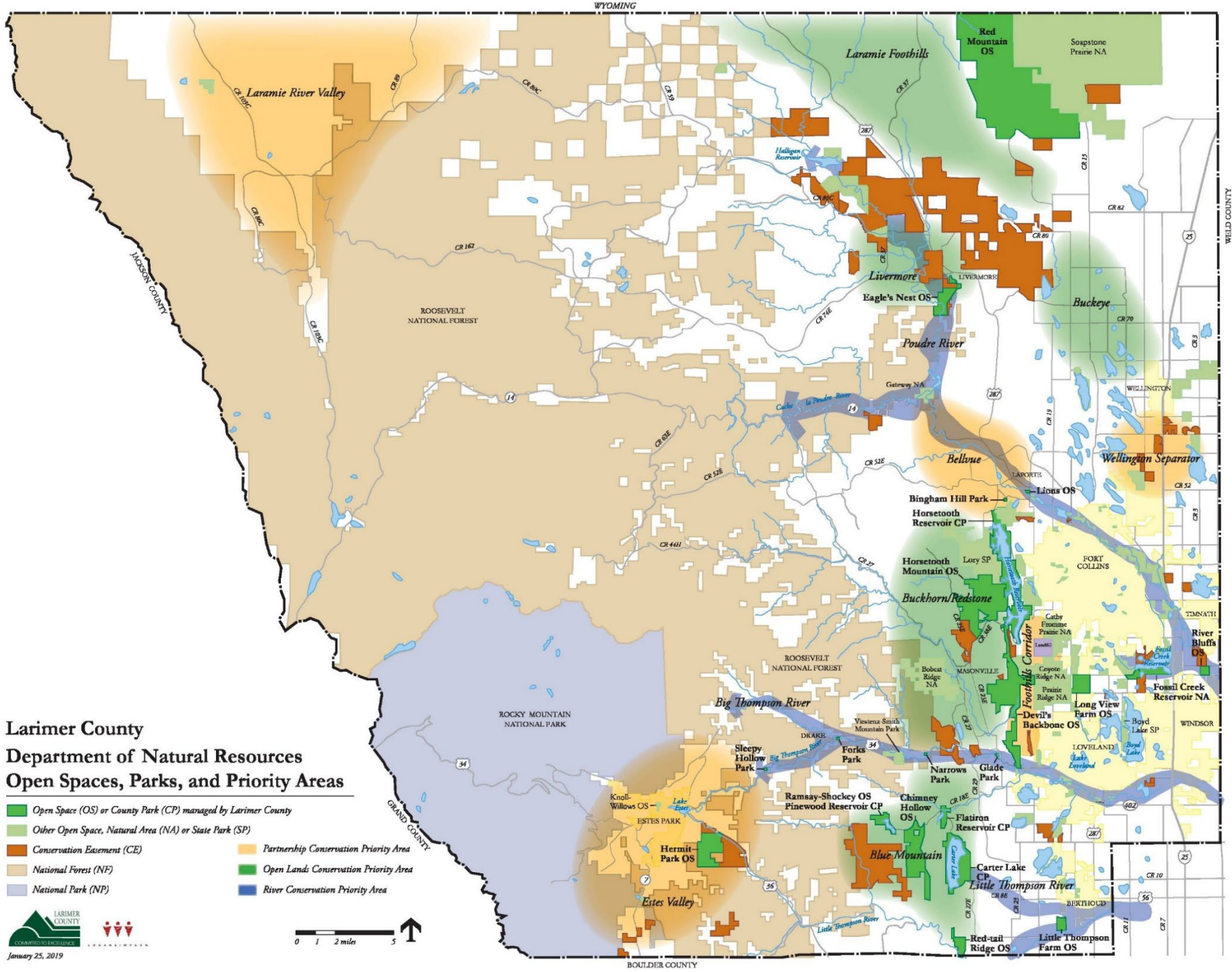
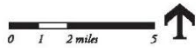
Please indicate what emphasis you would like to see Larimer County and our cities and towns pursue





# Larimer County Department of Natural Resources Open Spaces, Parks, and Priority Areas

- Open Space (OS) or County Park (CP) managed by Larimer County
- Other Open Space, Natural Area (NA) or State Park (SP)
- Conservation Easement (CE)
- National Forest (NF)
- Partnership Conservation Priority Area
- Open Lands Conservation Priority Area
- National Park (NP)
- River Conservation Priority Area



WYOMING

JACKSON COUNTY

WELD COUNTY

GRAND COUNTY

BOULDER COUNTY

## ACQUISITION STRATEGY

Analysis of key parcels within Master Plan priority areas

- 100 acres or larger
- High natural, community separator, agricultural, recreation, and/or scenic values

Approach

- Meet with partners on areas of shared interest
- Proactively call landowners/letter



# FUTURE GROWTH LEVEL OF SERVICE PER CAPITA

## 2018

Population 345,000



50,000 Acres Conserved



97 Miles Of Trails



665 Trailhead Parking Spaces



## 2043

Added Projected Population 150,000

495,000  
Population

Add 24,000 Acres Conserved

74,000  
Acres

Add 44 Miles Of Trails

141  
Miles

Add 300 Parking Spaces

965  
Parking  
Spaces

# TOOLS FOR LAND CONSERVATION

## Natural Resources Department

- Fee-simple Acquisitions
- Conservation Easements
- Trail Easements

## Community Planning Department

- Development Review
  - Restrictive Covenants
  - Buffers, Trail Easements
- Conservation Developments
- Rural Land Use Process



# CONSERVATION EASEMENTS

## **Conservation Easement:**

*A legal agreement between a landowner and a land trust or government agency that permanently limits uses of the land to protect its conservation values.*



**Conservation Values:** Natural Resources, Wildlife Habitat, Recreation, Scenic Vistas, Buffers, Community Separators & Working Farms and Ranches

# SPECTRUM OF ACQUISITIONS & MGMT COST

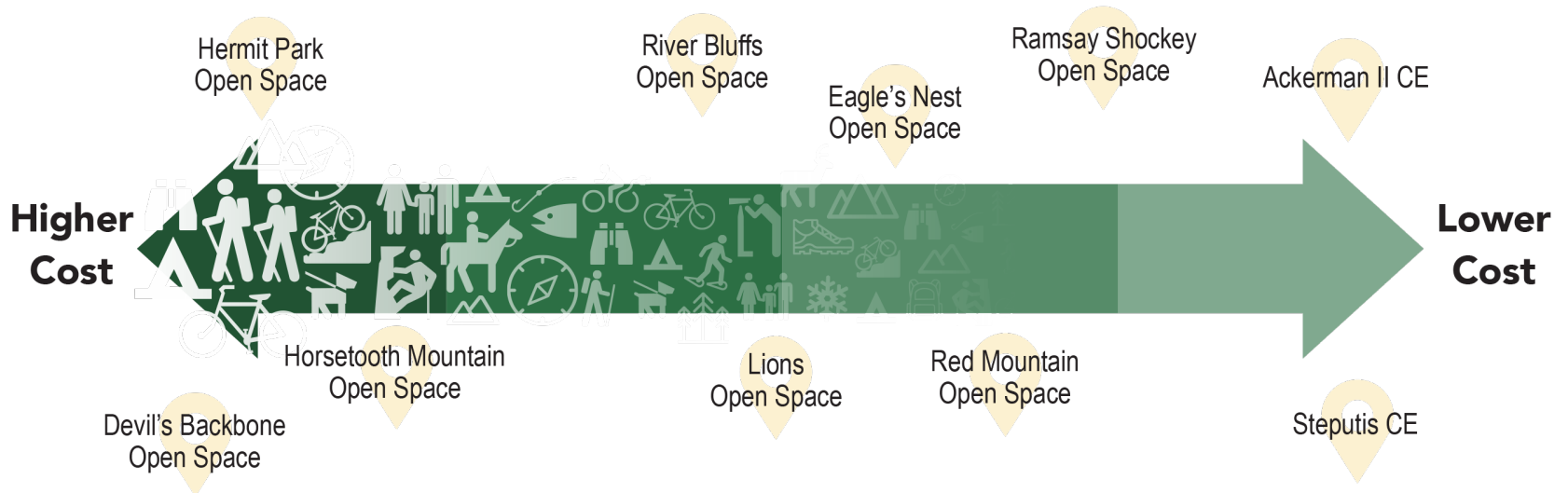
## Land Conservation and Recreation Portfolio

High Recreational Use  
Open Space Properties

Moderate Recreational Use  
Open Space Properties

Low Recreational Use  
and/or Agricultural  
Open Space Properties

Conservation  
Easements



**In 2020, the average management cost per acre across all categories is \$138.  
Maintenance cost per mile of trail/year is \$1,500.**

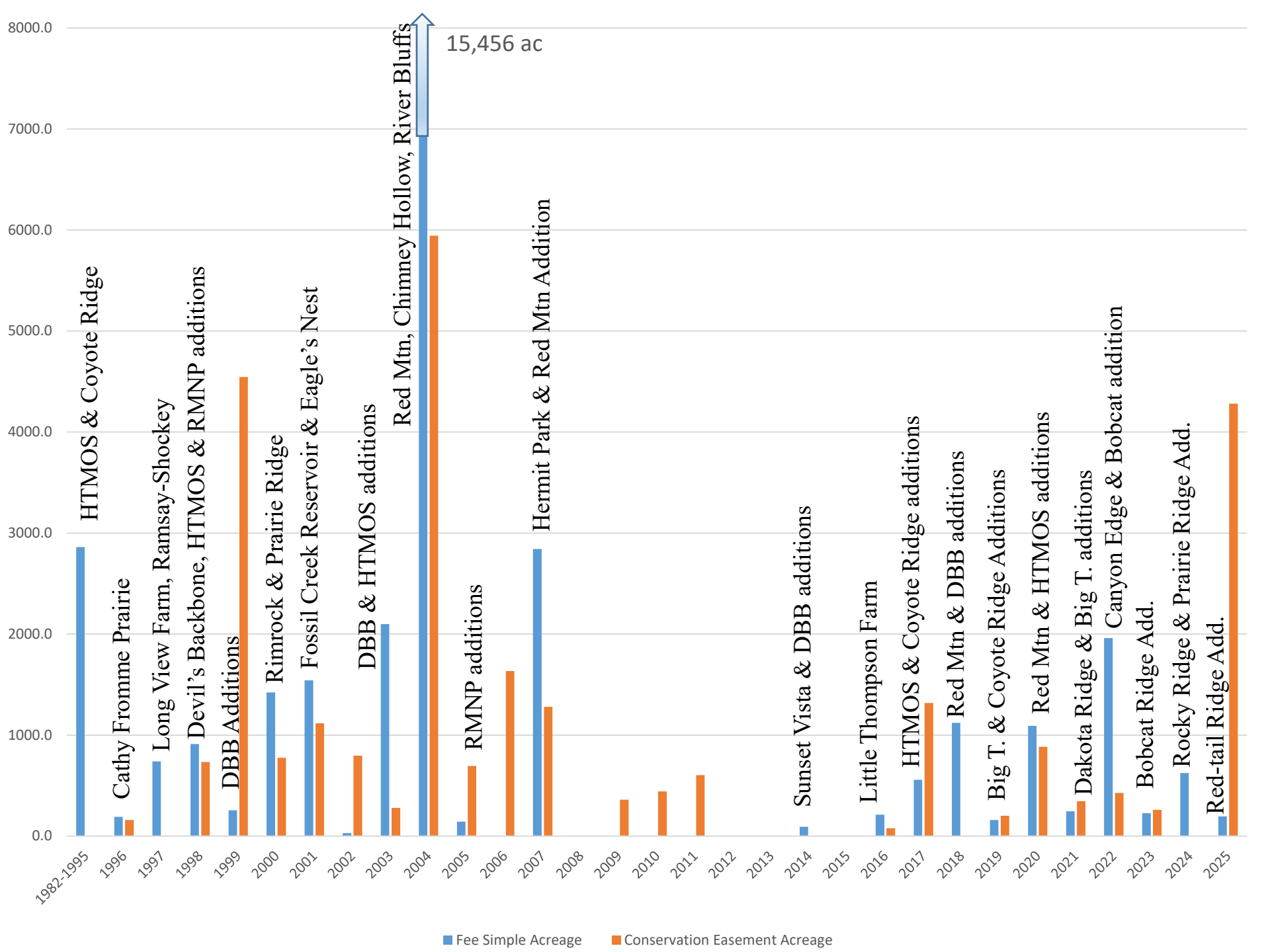


## 25-year financial model public access

	<u>Projected Opening</u>	<u>User Fees</u>
Chimney Hollow Open Space	2027	yes
Rural – low use/management cost	2029	yes
Urban – high use/management cost	2032	yes
Urban – high use/management cost	2035	yes
Urban – high use/management cost	2038	yes

Acquiring but postponing public access on the each new open space saves ~\$1,000,000/yr





# CURRENT PORTFOLIO

## Baseline

1996–2017: Conserved 50,000 acres (Larimer County with partners)

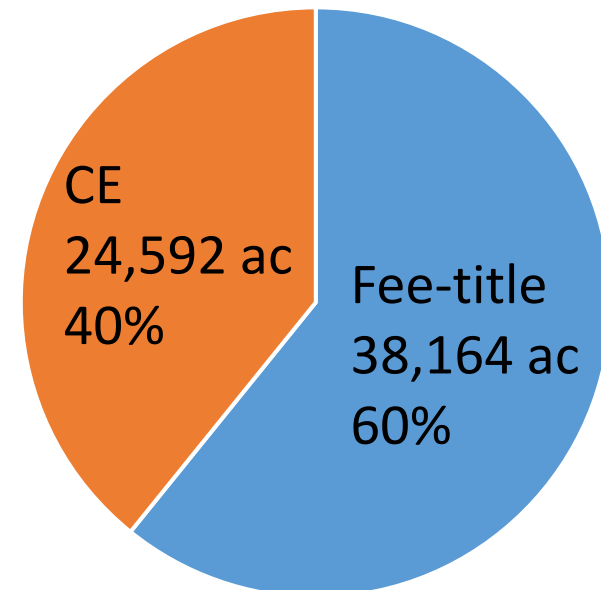
## Goal

Conserve additional 24,000 acres by 2043.

Total available acquisition funds \$129M (35% of HPOS tax)

## Status 2018-2025 (to date):

- Added 12,756 ac = total 62,756 acres (53% of goal met in first 8 years)
- Acquisition funds spent = \$25M (20% of available)



## Conserved or Restored Natural Landscapes

**Ecosystem Services:** Benefits provided by ecosystems that make human life possible.

- Wildlife Habitat – native plant species, pollinators, biodiversity
- Agricultural – native vegetation can be leased for livestock grazing
- Soils – rebuild soil structure, stability and resiliency; carbon storage
- Water – conserved native ecosystems filter (water quality) and absorb water (reduce flood risk).
- Riparian/Wetlands – flood attenuation, nutrient cycling, critical habitat (1% of land cover; 80% biodiversity in west)
- **Value in ecosystem services of Larimer County conserved lands = \$24.9M/yr**





## Questions and Discussion

