

# MITIGATION STRATEGY 1: Integrating the Water Plan into Existing Larimer County Plans

## LARIMER COUNTY WATER PLAN

Strategy Tags: #Supply&DemandPlanning  
#ChangesInLandUse #PlanAdoption



**DRAFT**  
10-4-24

### COUNTY ROLE: Lead

#### Opportunity Identified:

The Water Plan will become an element of the Larimer County's Comprehensive Plan, which is updated at least every ten years. It's crucial to integrate Water Plan outcomes into county-wide planning, policies, and decisions across all departments. This ensures water sustainability is embedded in our guiding documents.

#### Actions Identified:

- Ensure goals that have come out of the Water Master Plan process end up in the Comprehensive Plan update, and other relevant County plans.
- Determine staffing resources required for updates.
- Align the zoning map with water provider service areas, and locations of secure water availability, paying attention to zoning types and locations with high demand uncertainty.
- Conduct a comprehensive review of current Plans and Codes and assess current policy to identify specific areas for improvement around water efficiency and watershed health.
- Use the Comprehensive Plan update to reassess and determine

**TIMEFRAME: 1-5 Years**

if setbacks and buffer requirements are appropriate to protect watershed and agricultural health, and explore how adjacent land uses might affect water quality.

#### Why It's Important:

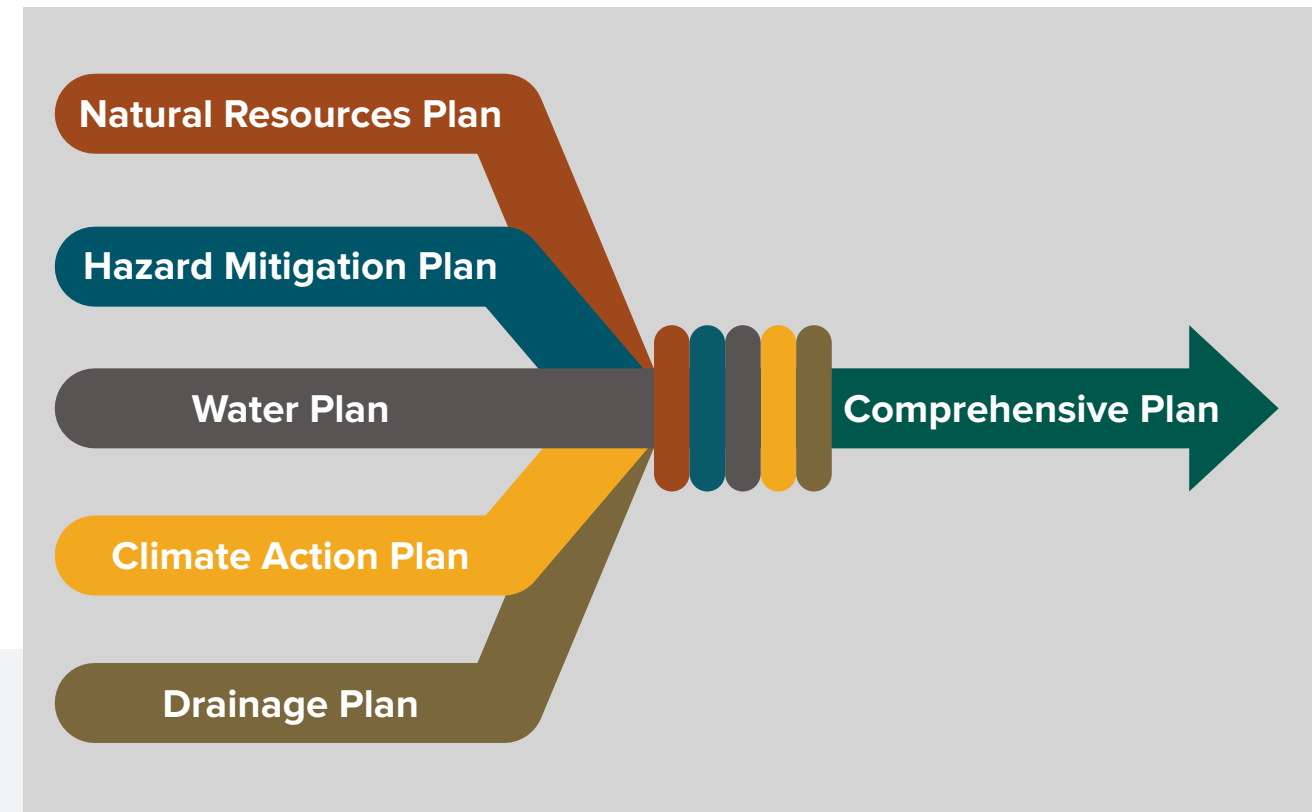
Aligning priorities is important for clear decision-making and smart use of resources. When all departments understand water resource goals, it helps avoid conflicting policies or projects that could harm sustainable water use. It also encourages better teamwork between departments and water providers, making sure water needs are a key part of planning decisions.

#### Desired Lasting Impact:

- Have water embedded in every level of planning.
- Become more resilient to climate change, improve water conservation, and protect watersheds.

#### Where Could the Efforts be Focused? >>>

Updating and integrating the water plan into existing county plans and codes will benefit the entire county.



The Water Plan will become an element of the Comprehensive Plan. Since the county doesn't manage its own water utility, it's important to figure out how the strategies from the Water Plan can work within existing plans and systems to ensure its success.

### STRATEGY LOGISTICS

#### Key Department(s)

Larimer County Department: Community Development

#### Staff Commitment

- Time to support grant writing processes
- Time and resources for thorough public engagement
- Time to manage consultant contracts

#### Potential County Funding Mechanisms:

Community Development budget and Grant Funding

SUMMARY	
Level of Total Investment	● ● ○ ○ ○
Total Cost (\$)	● ○ ○ ○ ○
Staffing Requirements	● ● ○ ○ ○
Lasting Value	● ● ● ● ○
Partnership Opportunities	● ● ● ○ ○
Plan Goals Addressed	Goal 2: Obj 1, Obj 2 Goal 4: Obj 1, Obj 4 Goal 5: Obj 1, Obj 2

### POTENTIAL PARTNERS

Primarily an internal county lead effort with input from the public.

### ADDITIONAL FUNDING OPPORTUNITIES

#### CWCB (Colorado Water Conservation Board)

- [cwc.colorado.gov/funding/grants](http://cwc.colorado.gov/funding/grants)

#### DOLA (Department of Local Affairs)

- [dlg.colorado.gov/climate-resilience-challenge](http://dlg.colorado.gov/climate-resilience-challenge)
- [dlg.colorado.gov/community-development-block-grant-cdbg](http://dlg.colorado.gov/community-development-block-grant-cdbg)

#### BOR (Bureau of Reclamation)

- [usbr.gov/watersmart/index.html](http://usbr.gov/watersmart/index.html)

# Support Fuel Reduction Outcomes



**DRAFT**  
10-4-24



**COUNTY ROLE: Lead and/or Partner**

**Opportunity Identified:**

While it is known that forest fires naturally occur and can be beneficial for forest ecology and health, uncontrolled and extreme fires are hazardous for nearby communities and can have detrimental effects on water quality, supply, and flooding. Many organizations work to reduce fuels in vulnerable locations. The county seeks to selectively support and add value as appropriate to these organizations to improve coordination, funding and documentation to boost the effectiveness of these efforts.

**Actions Identified:**

- Support effective mitigation treatment, including partner efforts on prescribed fires.
- Support grant writing and reporting efforts.
- Consider providing financial and labor resources to support projects, recognizing that this would require significant additional resources and thoughtful timber harvesting.
- Partner with State and Federal Agencies to facilitate mitigation treatment.
- Explore the possibility of supporting mitigation treatment for

**TIMEFRAME: Ongoing**

homes, or providing resources to ensure residents have access to information on the home ignition zones.

**Why It's Important:**

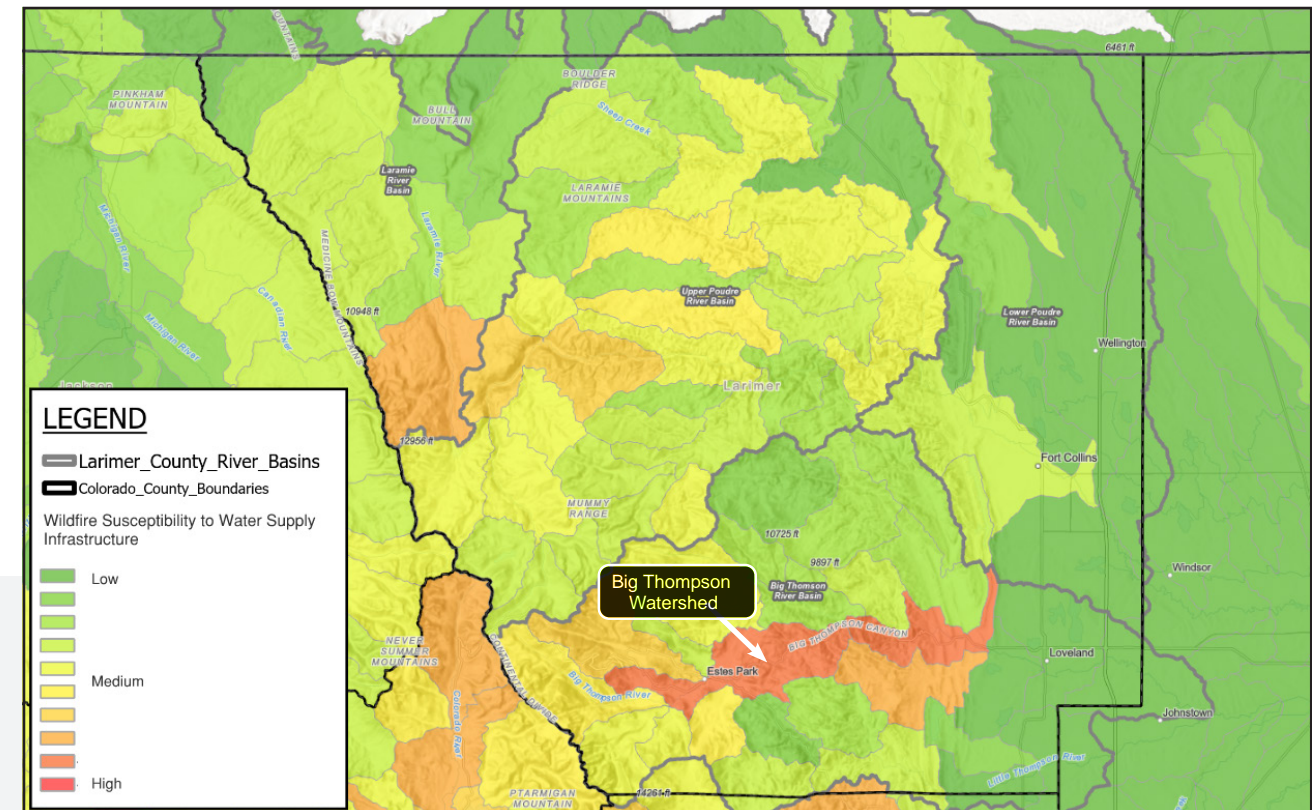
Fuel reduction removes flammable materials like dry vegetation, slowing wildfire spread and intensity, making fires easier to control and less destructive. Better coordination between organizations will make fuel reduction efforts more impactful and use resources more efficiently.

**Desired Lasting Impact:**

- Improved forest and watershed health.
- Reduced frequency and intensity of wildfires.
- Better coordination and data sharing between groups who contribute to fuel reduction efforts.

**Where Could the Efforts be Focused? >>>**

The county will aim to support partner efforts in areas that pose the greatest threat to people, homes and water supplies in the event of a wildfire. The Big Thompson Watershed is highlighted on the map as an area of higher priority.



The map above shows CWCB data highlighting watersheds where wildfires have a higher potential to affect the water supply.



**STRATEGY LOGISTICS**

**Key Department(s)**

Larimer County Department: Office of Emergency Management, Dept. of Natural Resources, Sheriff's Office

**Staff Commitment**

- Time to coordinate with other entities
- Time to support grant writing process
- Potentially additional hires to execute projects

**Potential County Funding Mechanisms:**

County General Fund, Department Funds, and Grant Funds

SUMMARY	
Level of Total Investment	●●●○
Total Cost (\$)	●●●●○
Staffing Requirements	●●●○
Lasting Value	●●●●○
Partnership Opportunities	●●●●○
Plan Goals Addressed	Goal 1: Obj 1, Obj 2 Goal 2: Obj 1



**POTENTIAL PARTNERS**

**USFS**

United States Forest Service

**CSFS**

Colorado State Forest Service

**CFRI**

Colorado Forest Restoration Institute

**LCD**

Larimer Conservation District

**CPRW**

Coalition for the Poudre River Watershed

**BTWC**

Big Thompson Watershed Coalition

**BTWHP**

Big Thompson Watershed Health Partnership

**EVWC**

Estes Valley Watershed Coalition

**WRV**

Wildlands Restoration Volunteers

**LCCC**

Larimer County Conservation Corps

**Fire Districts**

**LCSOES**

Larimer County Sheriffs Office



**ADDITIONAL FUNDING OPPORTUNITIES**

**CODNR/CWCB (Colorado Department of Natural Resources/Colorado Water Conservation Board)**

- [cwcb.colorado.gov/funding/grants](http://cwcb.colorado.gov/funding/grants)

**FEMA (Federal Emergency Management Agency)**

- [fema.gov/grants](http://fema.gov/grants)

**DOLA (Department of Local Affairs)**

- [dlg.colorado.gov/climate-resilience-challenge](http://dlg.colorado.gov/climate-resilience-challenge)

**Additional Partnering with CFRI (Colorado Forest Restoration Service)**

- [cfri.colostate.edu/projects/wildfire-risk-reduction-grant-program/](http://cfri.colostate.edu/projects/wildfire-risk-reduction-grant-program/)

**USFS (U.S. Forest Service)**

- [fs.usda.gov/working-with-us/grants](http://fs.usda.gov/working-with-us/grants)

**CSFS (Colorado State Forest Service)**

- [csfs.colostate.edu/grants](http://csfs.colostate.edu/grants)



**DRAFT**  
10-4-24



### COUNTY ROLE: Partner

#### Opportunity Identified:

Larimer County's watershed health groups monitor water quality, restore ecosystems, educate communities, and advocate for protective policies. The County aims to boost their efforts. This strategy will be closely coordinated with the Support Fuel Reduction Outcomes strategy.

#### Actions Identified:

- Partner and coordinate on projects with local watershed coalitions and other agencies for both public and private lands.
- Identify potential funding sources.
- With funding sources identified, consider a fund for small grants for watershed coalitions that might grow into a larger fund for urgent needs and innovative projects as funding is available.
- Help Watershed Coalitions amplify event messaging, if desired, through communication support, ensuring broad audience reach, and visibility.



**TIMEFRAME: Ongoing**

- Support partner efforts to protect instream flows for river and habitat health.

#### Why It's Important:

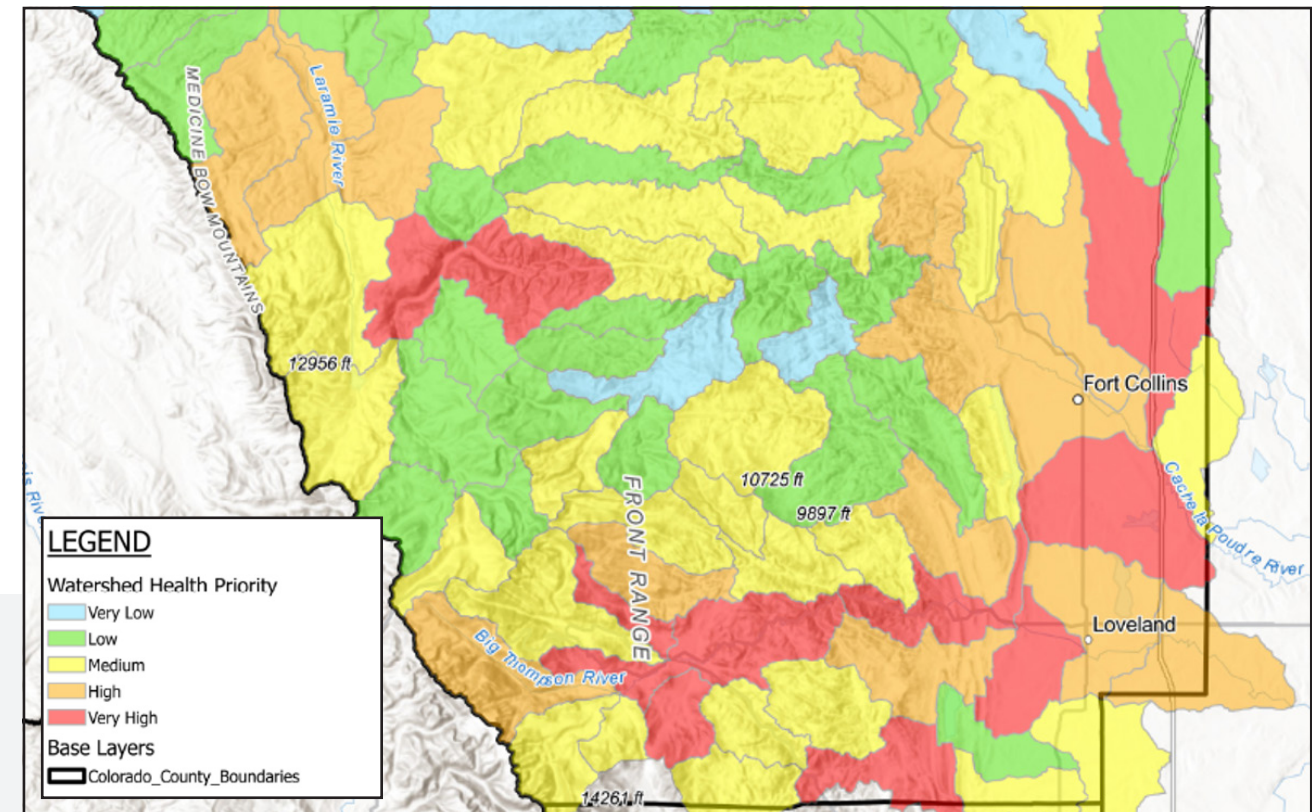
Healthy watersheds provide clean drinking water, support ecosystems, prevent erosion, and reduce the risk of flooding. They also filter pollutants, protecting water quality for humans and wildlife.

#### Desired Lasting Impact:

- Improved forest and watershed health.
- Ability to complete more projects to protect the county's watersheds.
- Increased audience reach and impact for education initiatives led by watershed coalitions in the county.

#### Where Could the Efforts be Focused? ▶▶▶

County resources will support projects and programs that address the needs of each watershed group and align with the county's watershed health priorities as well as the goals of the water plan.



The map above shows the priority related to challenges in watershed health (higher priority areas in orange and red). Projects in these watersheds will be prioritized when in line with county and watershed group goals.



### STRATEGY LOGISTICS

#### Key Department(s)

Larimer County Department: TBD

#### Staff Commitment

- Time to support grant writing processes
- Time for Finance Department to create a new fund
- Time to support education efforts

#### Potential County Funding Mechanisms:

Various County Budgets and Grant Funding

SUMMARY	
Level of Total Investment	●●●○○
Total Cost (\$)	●●●●○
Staffing Requirements	●●●○○
Lasting Value	●●●●●
Partnership Opportunities	●●●●○
Plan Goals Addressed	Goal 1: Obj 1, Obj 2 Goal 2: Obj 1



### POTENTIAL PARTNERS

#### NWCD

Northern Water Conservancy District

#### City of Fort Collins

#### City of Loveland

#### LCD

Larimer Conservation District

#### CPRW

Coalition for the Poudre River Watershed

#### BTWC

Big Thompson Watershed Coalition

#### BTWHP

Big Thompson Watershed Health Partnership

#### EVWC

Estes Valley Watershed Coalition



### ADDITIONAL FUNDING OPPORTUNITIES

#### CWCB (Colorado Water Conservation Board)

- [cwcb.colorado.gov/funding/grants](http://cwcb.colorado.gov/funding/grants)

#### FEMA (Federal Emergency Management Agency)

- [fema.gov/grants](http://fema.gov/grants)

#### DOLA (Department of Local Affairs)

- [dlg.colorado.gov/climate-resilience-challenge](http://dlg.colorado.gov/climate-resilience-challenge)

#### BOR (Bureau of Reclamation)

- [usbr.gov/watersmart/index.html](http://usbr.gov/watersmart/index.html)

#### USFS (U.S. Forest Service)

- [fs.usda.gov/working-with-us/grants](http://fs.usda.gov/working-with-us/grants)

#### CSFS (Colorado State Forest Service)

- [csfs.colostate.edu/grants](http://csfs.colostate.edu/grants)

# MITIGATION STRATEGY 4: Water Security



COUNTY ROLE: Lead

**DRAFT**  
10-4-24

### Opportunity Identified:

The County reviews water adequacy letters from the water provider for new developments to ensure proposed developments have secure water into the future. Due to the multiple water providers who operate in Larimer County, there is little consistency between what information is provided in the letters submitted. Feedback highlighted opportunities to improve water adequacy verification and ensure consistency between providers.

### Actions Identified:

- Create consistency between water providers in the information provided to the County during the development review process.
- Involve water provider stakeholders in future zoning discussions. This could be through individual meetings or through a collaborative group.
- Identify approved but unbuilt projects affected by current water moratoriums and collaborate with providers to address the issue.
- Start conversation with research institutions like the United States Geological Survey and Colorado State University on

**TIMEFRAME: 1-2 Years**

groundwater supply mapping and analysis.

### Why It's Important:

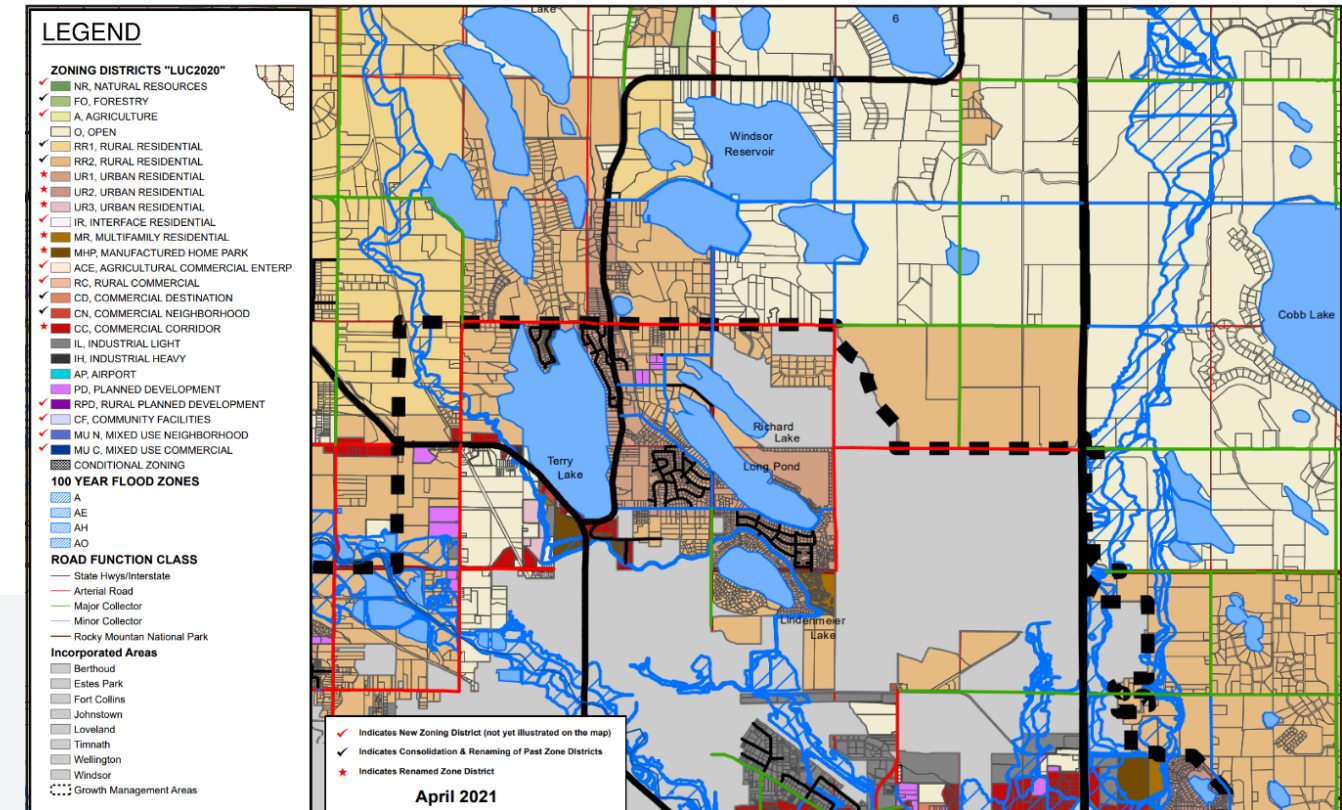
Water adequacy letters confirm that there is enough water for new developments, preventing strain on local resources and ensuring access without impacting existing users. Coordinating with water providers on changes to zoning is crucial to ensure adequate water for future developments.

### Desired Lasting Impact:

- Better aligned land use plans with water needs.
- Improved coordination with water providers related to zoning changes.
- Alignment with state statutes around water adequacy requirements.

### Where Could the Efforts be Focused? ►►

This strategy will focus on unincorporated Larimer County, with emphasis on areas where Commercial, Industrial, and Rural Residential zoning makes future water use harder to predict.



The map above shows the Larimer County Zoning Map (2021). Some land use types in undeveloped areas (such as Commercial, Industrial, and Rural Residential) can make it difficult for water providers to predict how much water they will use in the future.



## STRATEGY LOGISTICS

### Key Department(s)

Larimer County Department: Community Development

### Staff Commitment

- Create consistency between water providers in the information provided to the County during the development review process.
- Time to host more stakeholder meetings for changes in zoning.

### Potential County Funding Mechanisms:

Community Development Budget (No Significant Funding Required)

SUMMARY	
Level of Total Investment	●●○○○
Total Cost (\$)	●○○○○
Staffing Requirements	●●○○○
Lasting Value	●●●●○
Partnership Opportunities	●●●○○
Plan Goals Addressed	Goal 2: Obj 1, Obj 2 Goal 4: Obj 1



## POTENTIAL PARTNERS

### Larimer County Water Providers

**USGS**  
U.S. Geological Survey

**CSU**  
Colorado State University



## ADDITIONAL FUNDING OPPORTUNITIES

### CWCB (Colorado Water Conservation Board)

- [cwcb.colorado.gov/funding/grants](http://cwcb.colorado.gov/funding/grants)

### DOLA (Department of Local Affairs)

- [dlg.colorado.gov/climate-resilience-challenge](http://dlg.colorado.gov/climate-resilience-challenge)
- [dlg.colorado.gov/community-development-block-grant-cdbg](http://dlg.colorado.gov/community-development-block-grant-cdbg)

### BOR (Bureau of Reclamation)

- [usbr.gov/watersmart/index.html](http://usbr.gov/watersmart/index.html)

# MITIGATION STRATEGY 5: Protecting Water Supplies



**DRAFT**  
10-4-24

### COUNTY ROLE: Lead/Partner

#### Opportunity Identified:

As communities grow, so does the need for water. Stakeholder discussions stressed the importance of uniting to protect local water supplies from export. Recognizing many county residents rely on imported water, and no one can control the water market, the county still aims to work together through agreements and public statements to make their desires to safeguard local resources known.

#### Actions Identified:

- Draft a statement with regional input to protect Northern Colorado water supplies.
- Educate the public on reservoir project benefits, challenges, and review process to foster informed discussions.
- Explore funding opportunities through grants or legislative means to help protect local water supplies.
- Explore ways permanently preserve existing land use and tools

**TIMEFRAME: 1-2 Years**

to keep water tied to the land - considering several ways to discourage dry up covenants.

- Address reliance and potential future limitations on Larimer County water from transbasin diversions.
- Consider opportunities for the county to facilitate for stakeholder to meet regularly to discuss water supply topics.

#### Why It's Important:

Showing our unified commitment and desire to protect local water supplies helps our residents and outside entities understand our concerns and our limitations when it comes to water rights law. The county and its residents need adequate water in the region for agriculture, healthy environments and river systems, and for livable communities.

#### Desired Lasting Impact:

- Greater public and external awareness of the county's commitment to local water protection and the county's role in water supply projects.
- Enhanced unity among providers and county entities in safeguarding water resources in safeguarding water resources.

#### Where Could the Efforts be Focused? ▼▼▼

This strategy will focus on coordinating with Larimer County water providers, county-wide public education, and discussions with agricultural landowners whose land is close to urban development.



### STRATEGY LOGISTICS

#### Key Department(s)

Larimer County Department: TBD (Natural Resources and other county departments)

#### Staff Commitment

Time to coordinate with water providers and partners

#### Potential County Funding Mechanisms:

No Significant Funding Required

SUMMARY	
Level of Total Investment	●●●○○
Total Cost (\$)	●○○○○
Staffing Requirements	●●●○○
Lasting Value	●●○○○
Partnership Opportunities	●●●○○
Plan Goals Addressed	Goal 2: Obj 1 Goal 4: Obj 5

### POTENTIAL PARTNERS

**NWCD**  
Northern Water Conservancy District

**Other Larimer County Water Providers**

**Various Stakeholders with Ties to the Agricultural Community**

### ADDITIONAL FUNDING OPPORTUNITIES

**Additional Funding Unlikely Outside of Local Partners**

# MITIGATION STRATEGY 6: Improve Water Efficiency and Conservation

## LARIMER COUNTY WATER PLAN

Strategy Tags: #WaterConservation #WaterRights  
#Agriculture # WatershedHealth #Habitat



**DRAFT**  
10-4-24

**COUNTY ROLE: Lead**

**Opportunity Identified:**

Discussions revealed opportunities to update the county's Land Use and Building Codes to enhance water efficiency in new developments and to explore opportunities to encourage water efficient landscaping in existing developments.

**Actions Identified:**

- Update the Land Use Code to improve water efficiency in landscaping in new developments and ensure conformance with State requirements.
- Update the Building Codes to improve water efficiency in water fixtures and appliances. Work with Health and Environment to explore the possibility of allowing gray-water systems.

**TIMEFRAME: 1-6 Years**

- Look to implement, support, and connect residents to turf replacement and water-wise incentive programs.

**Why It's Important:**

Setting rules for efficient water use helps ensure a steady water supply, reduces environmental impact, and supports long-term management of water resources.

**Desired Lasting Impact:**

- Farmland and natural areas will be better shielded from the effects of urban expansion.
- Future developments will use less water.

**Where Could the Efforts be Focused?**

This strategy will focus on unincorporated areas slated for future development and areas where water efficiency could be improved in existing developments.



**STRATEGY LOGISTICS**

**Key Department(s)**

Larimer County Department: Community Development

**Staff Commitment**

- Time to coordinate with Municipalities
- Time to research best practices

**Potential County Funding Mechanisms:**

Grant Funded with potential matching help from departments above

SUMMARY	
Level of Total Investment	●●●●○
Total Cost (\$)	●●●○○
Staffing Requirements	●●○○○
Lasting Value	●●●●●
Partnership Opportunities	●●●○○
Plan Goals Addressed	Goal 4: Obj 1, Obj 4 Goal 5: Obj 1, Obj 2

**POTENTIAL PARTNERS**

**Neighboring Municipalities & Water Providers**

**Resource Central**

**NWCD**  
Northern Water Conservancy District

**ADDITIONAL FUNDING OPPORTUNITIES**

**CWCB (Colorado Water Conservation Board)**

- [cwcb.colorado.gov/funding/grants](http://cwcb.colorado.gov/funding/grants)

**DOLA (Department of Local Affairs)**

- [dlg.colorado.gov/climate-resilience-challenge](http://dlg.colorado.gov/climate-resilience-challenge)
- [dlg.colorado.gov/community-development-block-grant-cdbg](http://dlg.colorado.gov/community-development-block-grant-cdbg)

**BOR (Bureau of Reclamation)**

- [usbr.gov/watersmart/index.html](http://usbr.gov/watersmart/index.html)

# Protecting Water To Promote A Viable Agricultural Economy



**DRAFT**  
10-4-24

**COUNTY ROLE: Lead**

**Opportunity Identified:**

Opportunities were identified to create and improve education materials for communities in close proximity to agriculture to understand daily needs and processes for farmers. This coupled with other efforts could help residents understand the benefits of keeping water rights tied to the land they supply.

**Actions Identified:**

- Work with Larimer County Extension and other partners to educate urban users and foster informative discussions on agriculture operations, water use, and daily needs/ processes to promote mutual understanding and collaboration.
- Explore several tools to tie water to land. Maintaining viability of the agricultural economy.
- Work with farmers to increase water conservation, while

**TIMEFRAME: 3-10 Years**

addressing limitations associated with water rights.

- Identify actions or strategies to help ditch companies improve infrastructure to reduce water loss and improve efficiency.

**Why It's Important:**

Strengthening relationships between suburban and agricultural communities reduces inconveniences for both sides. This effort could help protect Larimer County's agricultural heritage and economy by improving the likelihood of keeping the water tied to agricultural land.

**Desired Lasting Impact:**

- Stronger relationships between urban and agricultural communities.
- Fewer disruptions to farming operations.
- Improved Viability of the county's agricultural economy through a higher likelihood of keeping water tied to agricultural land.

**Where Could the Efforts be Focused?**

This strategy will focus on areas where urban development is in close proximity to agricultural areas throughout the county.



The photo shows areas where farmers may face pressures from urban expansion, including traffic and nearby development.

**STRATEGY LOGISTICS**

**Key Department(s)**

Larimer County Department: TBD

**Staff Commitment**

- Time to develop and implement education campaign
- Time to network among stakeholders to ensure attendance at discussions and meetings
- Time to work on implications and desires of stakeholders to develop districts

**Potential County Funding Mechanisms:**

Grant Funded

SUMMARY	
Level of Total Investment	●●●●○
Total Cost (\$)	●●●○○
Staffing Requirements	●●●○○
Lasting Value	●●●●○
Partnership Opportunities	●●○○○
Plan Goals Addressed	Goal 2: Obj 1 Goal 3: Obj 2 Goal 4: Obj 1, 3 & 4

**POTENTIAL PARTNERS**

**LCD**

Larimer Conservation District

**Various Stakeholders with Ties to the Agricultural Community**

**ADDITIONAL FUNDING OPPORTUNITIES**

**USDA (United States Department of Agriculture)**

- [usda.gov/topics/farming/grants-and-loans](https://www.usda.gov/topics/farming/grants-and-loans)

**CWCB (Colorado Water Conservation Board)**

- [cwcb.colorado.gov/funding/grants](https://www.cwcb.colorado.gov/funding/grants)

**DOLA (Department of Local Affairs)**

- [dlg.colorado.gov/climate-resilience-challenge](https://www.dlg.colorado.gov/climate-resilience-challenge)
- [dlg.colorado.gov/community-development-block-grant-cdbg](https://www.dlg.colorado.gov/community-development-block-grant-cdbg)

**BOR (Bureau of Reclamation)**

- [usbr.gov/watersmart/index.html](https://www.usbr.gov/watersmart/index.html)

# MITIGATION STRATEGY 8: Growing Water Smart



**DRAFT**  
10-4-24

**COUNTY ROLE: Lead**

**Opportunity Identified:**

Larimer County was invited to participate in the growing water smart workshop beginning fall of 2024.

**Actions Identified:**

- Follow through on the actions identified in the 2024 workshop and continue the conversation to help rural and urbanizing communities integrate water and land use planning to better ensure their sustainability and resilience.
- Explore the possibility of attending the workshop again in the future to advance strategies related to watershed health and convene relevant partners.
- Follow-up on the grant opportunities identified in the 2024 workshop.
- Utilize grant funding and Strategic Plan funding to ensure internal capacity to implement the Water Plan.

**TIMEFRAME: 3-10 Years**

**Why It's Important:**

This workshop will help the county learn more about best practices for water management and conservation as our communities continue to grow.

**Desired Lasting Impact:**

- Growing water-smart will help the county and its residents use water wisely, reduce waste, protect resources, ensure supply, lower costs, and support ecosystems for long-term sustainability.
- Potential to attend the workshop again to advance strategies related to watershed health and continue the conversation with additional partners.

**Where Could the Efforts be Focused? >>>**

This strategy will educate county staff on practices, programs, and projects that could benefit the entire county as its communities continue to expand and require more water.



**STRATEGY LOGISTICS**

**Key Department(s)**

Larimer County Department: Community Development

**Staff Commitment**

- Time to attend workshop
- Time to coordinate with neighboring communities on workshop and initiatives that may come out of it.

**Potential County Funding Mechanisms:**

No Significant Funding Required

SUMMARY	
Level of Total Investment	●●○○○
Total Cost (\$)	●○○○○
Staffing Requirements	●●●○○
Lasting Value	●●●●○
Partnership Opportunities	●●●○○
Plan Goals Addressed	Goal 4: Obj 1-5 Goal 5: Obj 1 & 2

**POTENTIAL PARTNERS**

**NWCD**  
Northern Water Conservancy District

**Municipalities in Unincorporated Larimer County**

**ADDITIONAL FUNDING OPPORTUNITIES**

**No Funding Needed for workshop. Funding for Follow-on Activities Could Include:**

**CWCB (Colorado Water Conservation Board)**

- [cwcb.colorado.gov/funding/grants](http://cwcb.colorado.gov/funding/grants)

**DOLA (Department of Local Affairs)**

- [dlg.colorado.gov/climate-resilience-challenge](http://dlg.colorado.gov/climate-resilience-challenge)
- [dlg.colorado.gov/community-development-block-grant-cdbg](http://dlg.colorado.gov/community-development-block-grant-cdbg)

**BOR (Bureau of Reclamation)**

- [usbr.gov/watersmart/index.html](http://usbr.gov/watersmart/index.html)





**DRAFT**  
10-4-24



### COUNTY ROLE: Lead and/or Partner

#### Opportunity Identified:

Stakeholder discussions helped the county identify programs and internal initiatives to enhance public water education and provide a resource hub for residents - partnered with Colorado Water Center water education series.

#### Actions Identified:

##### EDUCATION:

- Identify staffing resources.
- Expand water education on sources, rights, and conservation. Offer resources, local field trips, education on fire-water links, and conservation campaign materials.
- Provide educational events on habitat and water quality at Larimer County parks and open spaces.
- Explore supporting Project WET (Water Education Today) and other education efforts.

**TIMEFRAME: 1-2 Years**

- Consider continuing Water Education Series.

#### RESOURCE CLEARINGHOUSE:

- Create an interactive map of water provider service areas.
- Guide the public to local water conservation resources.
- Offer information for newcomers on the County website.

#### Why It's Important:

The public has a huge part to play in protecting our water. Education for children and adults leads to better decisions and more passionate and informed communities.

#### Desired Lasting Impact:

- Better-informed decisions and engagement.
- Increased passion for protecting water and the environment among people of all ages.
- Stronger partnerships with water education organizations.

#### Where Could the Efforts be Focused? ▼▼▼

This strategy will benefit the entire county but could also concentrate education efforts on identified focus areas based on the topic and need.



### STRATEGY LOGISTICS

#### Key Department(s)

Larimer County Department: TBD

#### Staff Commitment

- Time to support networking with schools
- Time to develop resources and website hub
- Potential time for GIS staff to develop portal

#### Potential County Funding Mechanisms:

County Budget matched with Grant Funding

SUMMARY	
Level of Total Investment	●●●○○
Total Cost (\$)	●●○○○
Staffing Requirements	●●●○○
Lasting Value	●●●○○
Partnership Opportunities	●●●●○
Plan Goals Addressed	Goal 2: Obj 2 Goal 3: Obj 1 & 2 Goal 5: Obj 2



### POTENTIAL PARTNERS

- CWC**  
Colorado Water Center (Project WET)
- CSU**  
Colorado State University
- NWCD**  
Northern Water Conservancy District
- Resource Central**
- WEC**  
Water Education Colorado
- Local Water Providers**



### ADDITIONAL FUNDING OPPORTUNITIES

- CWCB (Colorado Water Conservation Board)**
- [cwcb.colorado.gov/funding/grants](http://cwcb.colorado.gov/funding/grants)

# Address Water Efficiency in Disproportionately Impacted Communities



**DRAFT**  
10-4-24



**COUNTY ROLE: Partner**

**Opportunity Identified:**

Although the county has limited authority over water infrastructure in under-served communities, it will still promote water efficiency upgrades to lower resident water bills and support infrastructure projects when possible.

**Actions Identified:**

- Collaborate on efforts in incorporated areas and help to coordinate initiatives in unincorporated Larimer County.
- Promote existing programs to offer discounted or free water fixture upgrades to reduce resident water bills.

**Why It's Important:**

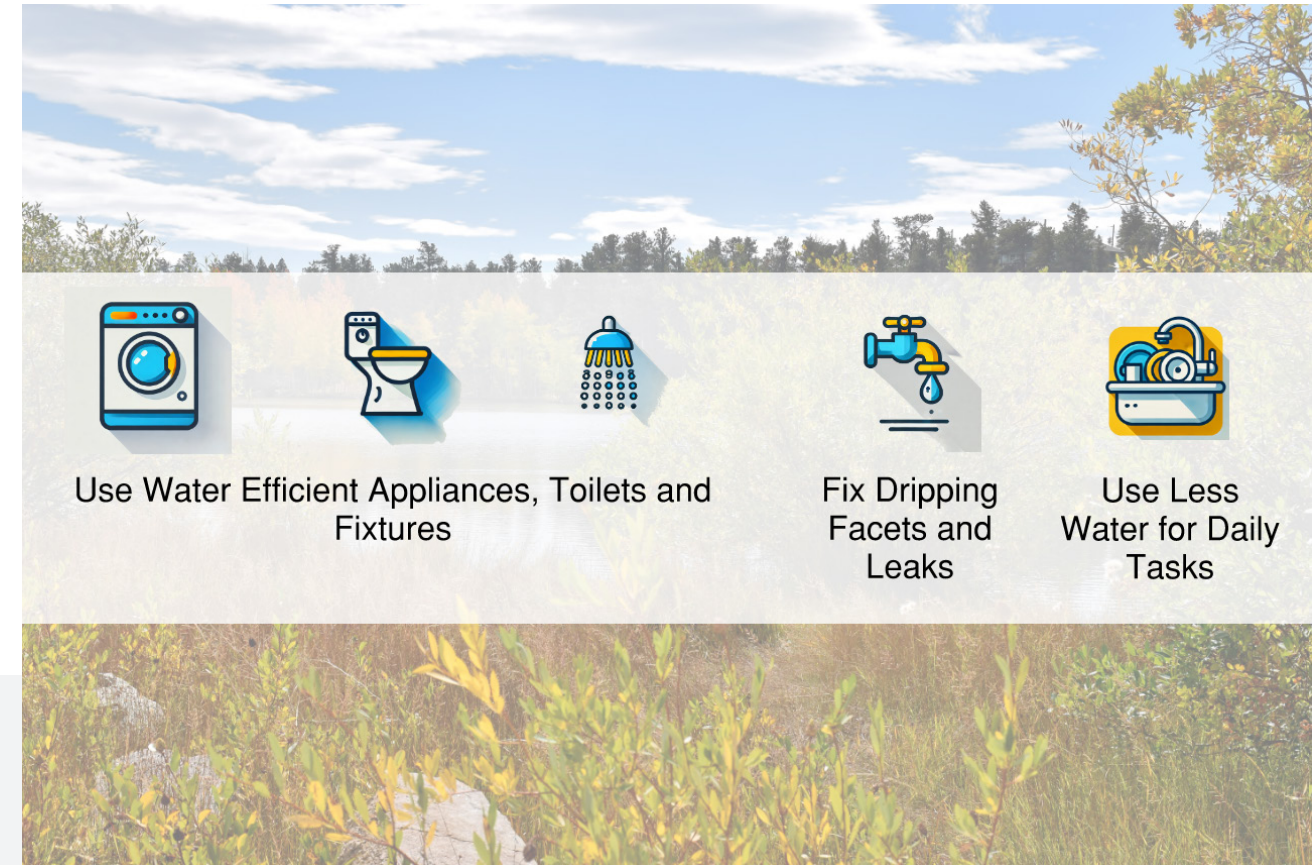
Many vulnerable communities rely on outdated water infrastructure that can leak and raise water bills. In some communities, these systems are privately owned and not managed by water providers, making maintenance difficult. It's important to help reduce the financial burden of the residents anyway possible.

**Desired Lasting Impact:**

- Some reduction in water bills for park residents through water efficiency practices.
- Stronger partnerships to address the needs of these communities.

**Where Could the Efforts be Focused? >>>**

This strategy will target areas identified as vulnerable by the EPA's Enviroscreen database.



Use Water Efficient Appliances, Toilets and Fixtures

Fix Dripping Facets and Leaks

Use Less Water for Daily Tasks

**TIMEFRAME: 3-10 Years**



**STRATEGY LOGISTICS**

**Key Department(s)**

Larimer County Department: TBD

**Staff Commitment**

- Time to promote and educate residents on efficiency programs
- Time to coordinate with water providers as opportunities to support arise.

**Potential County Funding Mechanisms:**

No Significant Funding Required

SUMMARY	
Level of Total Investment	●●●○○
Total Cost (\$)	●●○○○
Staffing Requirements	●●○○○
Lasting Value	●●●○○
Partnership Opportunities	●●●○○
Plan Goals Addressed	Goal 2: Obj 1 Goal 4: Obj 2 Goal 5: Obj 1



**POTENTIAL PARTNERS**

**CWC**

Colorado Water Center

**NWCD**

Northern Colorado Conservancy District

**Local Water Providers**

**Housing Advocacy Groups**



**ADDITIONAL FUNDING OPPORTUNITIES**

**NWCD (Northern Water Conservancy District)**

- [northernwater.org/grants](http://northernwater.org/grants)

**CDPHE (Colorado Department of Public Health & Environment)**

- [cwcb.colorado.gov/funding/grants](http://cwcb.colorado.gov/funding/grants)