

Proposed Zoning Amendments to Larimer County Zoning

ZONING DISTRICTS "LUC2020"

- NR, NATURAL RESOURCES
- FO, FORESTRY
- A, AGRICULTURE
- O, OPEN
- RR1, RURAL RESIDENTIAL
- RR2, RURAL RESIDENTIAL
- UR1, URBAN RESIDENTIAL
- UR2, URBAN RESIDENTIAL
- UR3, URBAN RESIDENTIAL
- IR, INTERFACE RESIDENTIAL
- MR, MULTIFAMILY RESIDENTIAL
- MHP, MANUFACTURED HOME PARK
- ACE, AGRICULTURAL COMMERCIAL ENTERP
- RC, RURAL COMMERCIAL
- CD, COMMERCIAL DESTINATION
- CN, COMMERCIAL NEIGHBORHOOD
- CC, COMMERCIAL CORRIDOR
- IL, INDUSTRIAL LIGHT
- IH, INDUSTRIAL HEAVY
- AP, AIRPORT
- PD, PLANNED DEVELOPMENT
- RPD, RURAL PLANNED DEVELOPMENT
- CF, COMMUNITY FACILITIES
- MU N, MIXED USE NEIGHBORHOOD
- MU C, MIXED USE COMMERCIAL
- CONDITIONAL ZONING
- ESTES VALLEY PLANNING AREA
- ROCKY MOUNTAIN NATIONAL PARK

100 YEAR FLOOD ZONES

- A
- AE
- AH
- AO

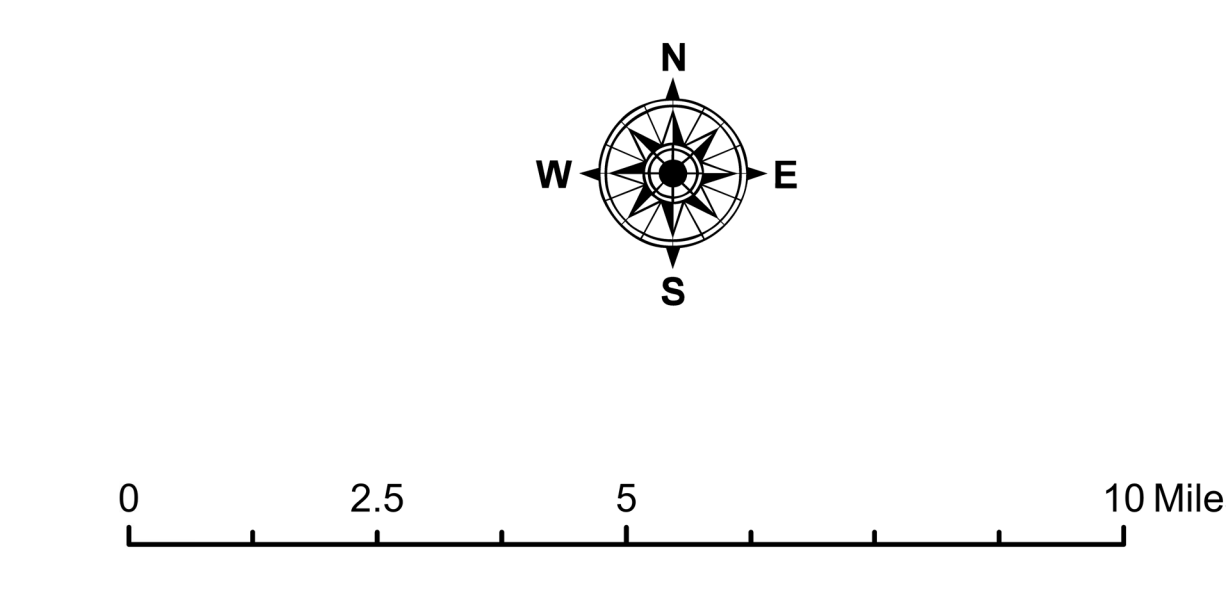
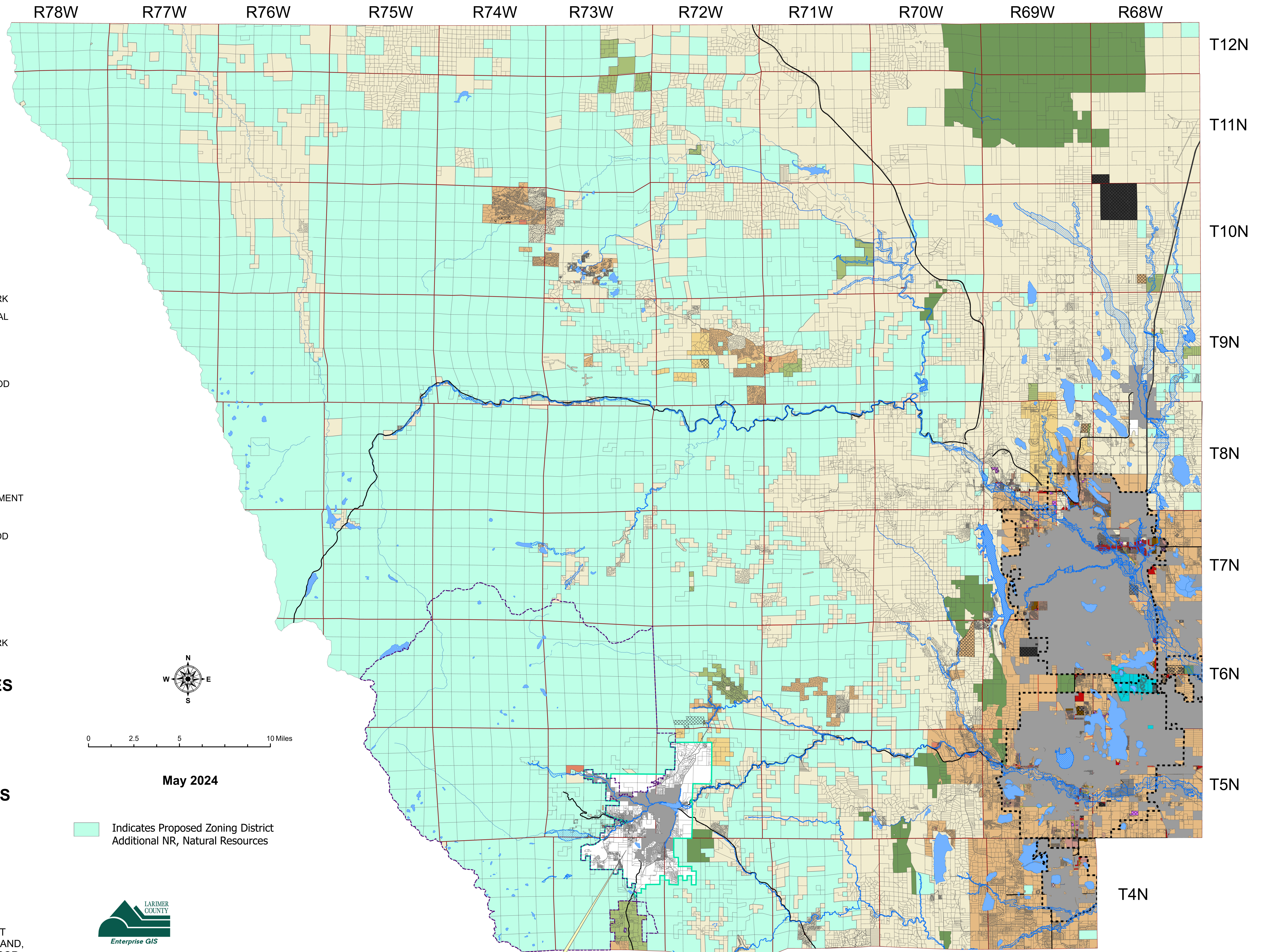
ROAD FUNCTION CLASS

- ARTERIAL-MAJOR
- CLCTR-MAJOR
- CLCTR-MINOR
- HWY
- INTRSTAT

Incorporated Areas

- BERTHOUD, ESTES PARK, FORT COLLINS, JOHNSTOWN, LOVELAND, TIMNATH, WELLINGTON, WINDSOR

- Growth Management Areas



May 2024

Indicates Proposed Zoning District
Additional NR, Natural Resources



Created by Larimer County Enterprise GIS using data from multiple sources. Larimer County makes no warranty as to the accuracy. This product may not reflect recent updates before the date of printing.

The information on this map is designed for general planning purposes. It is not intended for appraisal, engineering, legal or other purposes. Larimer County makes no guarantee as to the accuracy or usefulness of this information other than for its intended use by the Larimer County Community Development Department. The Community Development Department welcomes comments concerning the accuracy of the information depicted on this map in order to continually improve its database.

See
"Larimer County Zoning Districts Map
Estes Valley Planning Area"