



# Climate Smart Future Ready



## Get Involved!

We need the community's help and input.

Check the [Climate Smart Future Ready](#) website for updates, opportunities, and ways to get involved.



# Letter from the Board of Commissioners



Colorado communities and businesses face significant challenges as they adjust to a hotter and drier future. Climate change will affect every community and natural environment in the state with drought, higher temperatures, wildfires, flooding, and serious economic impacts.

To address climate resiliency, we must cooperate with community groups, colleges, non-profits, cities and towns, and the private sector. We look forward to building these relationships as the risks and hazards are becoming more evident in our state and region. We will focus on fairness, community health, and economic stability to guide our actions.

We have developed prioritized actions for our built environment, natural environment, and

transportation services. Working together, we created strategies to make the air, water and land cleaner and people healthier.

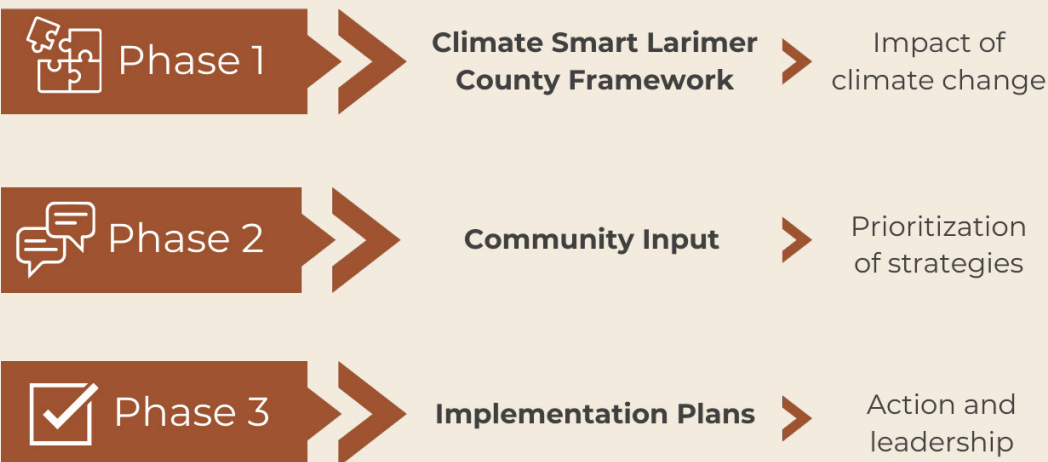
These strategies can make communities stronger and improve our quality of life in Larimer County. We have produced shared solutions to protect the environment and will track our progress every year.

We welcome you to follow along and get engaged as we strive to become Climate Smart and Future Ready. Please visit [our website](#) or contact us at [bocc@larimer.org](mailto:bocc@larimer.org).

Sincerely,

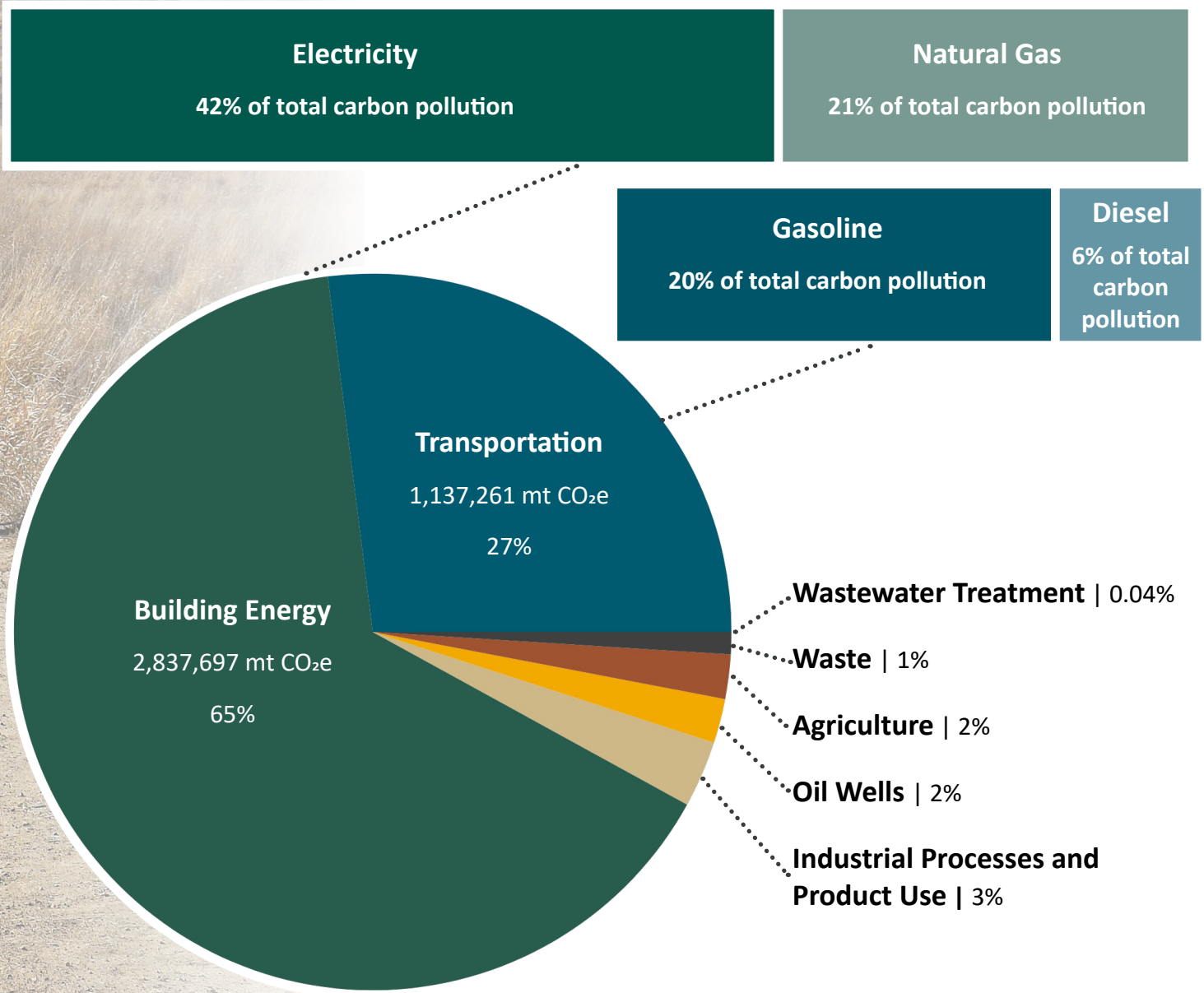
Jody Shadduck-McNally, John Kefalas, and Kristin Stephens  
Larimer County Board of Commissioners

## The Planning Process

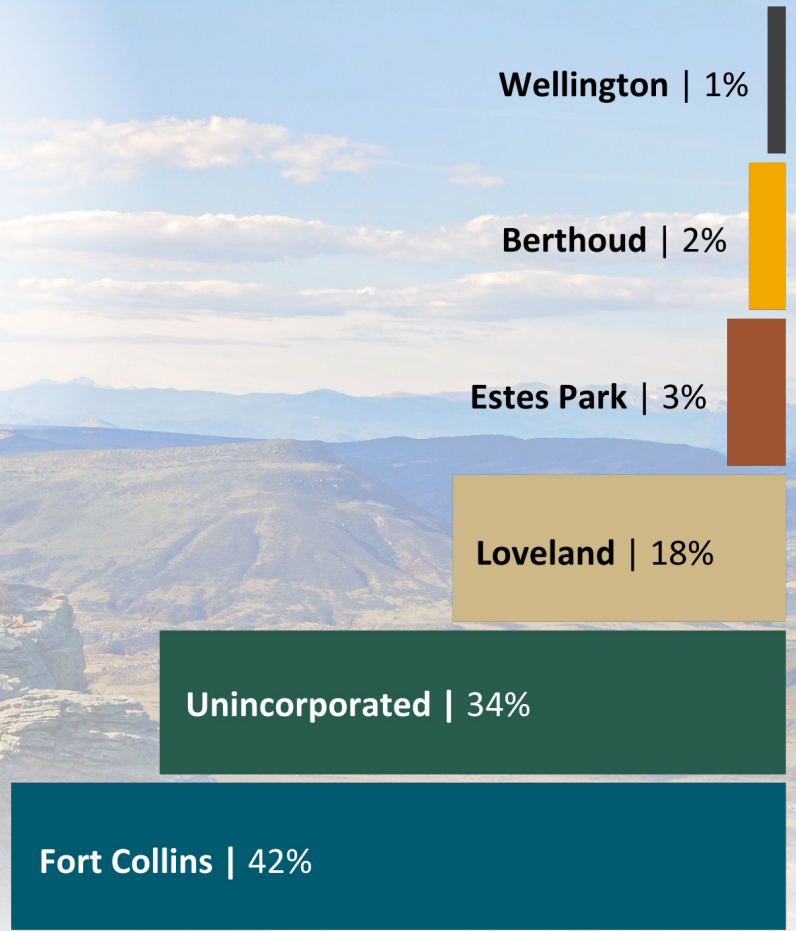


# 2022 GHG Emissions Overview

Larimer County created a county-wide greenhouse gas (GHG) emissions inventory that provides valuable information regarding activities that generate carbon pollution in the community. This helps us understand where and how the County and its partners can focus efforts to reduce emissions. The inventory measured pollution from carbon dioxide, nitrous oxide, and methane, which are the three most prominent greenhouse gas pollutants. Results are reported in metric tons of carbon dioxide equivalent (mtCO<sub>2</sub>e). The unit "CO<sub>2</sub>e" represents an amount of a GHG whose impact has been standardized to reflect one unit of carbon dioxide (CO<sub>2</sub>), based on the global warming potential of the gas. These numbers and the emissions inventory illustrate that the greatest carbon pollution comes from the use of energy to heat and cool buildings across Larimer County and transportation activities.

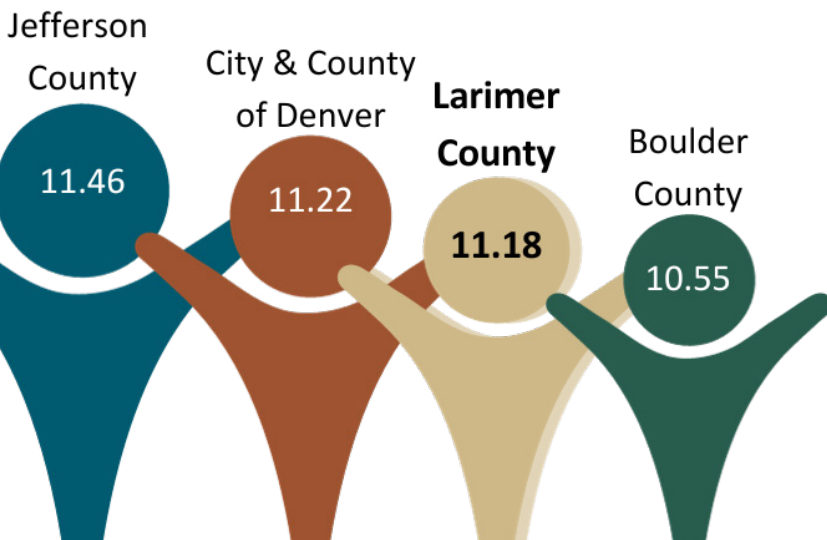



Total emissions in Larimer County in 2022 were 4,242,532 mt CO<sub>2</sub>e.



To put the total emissions values into perspective, the following comparisons illustrate the magnitude of the impact of this carbon pollution.

Emissions per capita values (mt CO<sub>2</sub>e) for Larimer County and its neighbors.



 31,825,753 tanks of gasoline for your car

or

10,061,871 roundtrip flights from Denver to New York



or



Energy use for 536,348 homes

# Our Plan for Action

The focus areas and strategies for the plan are shown below.

## Interconnected Strategies



- » Identify unifying solutions through a policy, planning, and equity lens.
- » Share climate related health risks and solutions for communities in Larimer County.

## Built Environment, Circular Economy, Business & Jobs



- » Improve new and existing building through energy saving and electrification actions.
- » Move renewable energies forward and improve energy system protection and resilience.



- » Expand the regional ability to accept and process compostable and recyclable materials.
- » Expand and create markets where a good or product will be used by another organization for its own operations.



- » Support the development of businesses that take into account the environmental impacts of their operations or products/services.
- » Expand the amount of regional jobs in the environmental field while emphasizing the need to be fair and inclusive to everyone.

## Natural Environment, Water, & Agriculture



- » Expand, protect, and improve critical regional wildlife habitats, corridors, and ecosystems.
- » Reduce disaster impacts from and adapt to natural hazards and extreme weather.



- » Increase regional effectiveness of water use across urban, agricultural, and ecological needs.



- » Support and expand regional agriculture.
- » Maintain and improve soil health practices.
- » Support and expand access to local food markets.

## Mobility of People, Goods, & Services



- » Enhance and expand regional transportation.
- » Expand infrastructure for walking, biking, non-electric scooters, skates, skateboards, etc.



- » Accelerate infrastructure and adoption of electric vehicles and e-bikes.

# Centering Equity

An equity toolkit was created to embed equity in the strategies and implementation actions. Action Champions are tasked with applying the toolkit to each action and engaging stakeholders throughout Larimer County. This will help to ensure that as the plan is implemented, opportunities to advance equity and the quality of life for our whole community are leveraged.

# What's Next?

Various County departments, as well as jurisdictions and organizations from across Larimer County, have agreed to serve as Action Champions to advance this work. Check out the dashboard on the [website](#) to track our progress. The County and Action Champions will provide annual progress updates to the community.

## Champion Organizations

### County Departments

Climate and Sustainability Office	Office of Emergency Management
Community Development	Sheriff Office
Economic and Workforce Development	Solid Waste
Health Department	
Legislative Affairs	
Natural Resources	



### Community Organizations

Carbon Neutral Group	North Front Range Metropolitan Planning Organization
City of Fort Collins	Northern Colorado Foodshed Project and Poudre Food Partnership
City of Loveland	Poudre Valley Community Farms
CSU Climate Initiative	
CSU Extension Office	
Drive Clean Colorado	
Larimer County Conservation District	

## Community Partners

A1 Organics	Ducks Unlimited	Platte River Power Authority
Agriculture Advisory Board	e-Lightening Motor	Poudre River Public Library
Bike Fort Collins	Environment & Sciences Advisory Board	Poudre School District
Bird Conservancy for the Rockies	Estes Valley Watershed Coalition	Poudre Valley Rural Electric Authority
Board of Appeals	Extension Advisory Board	Regional Air Quality Council
Colorado State Forest Service	Fort Collins Chamber of Commerce	Republic Services
Coalition for the Poudre River Watershed	Land Stewardship Advisory Board	Sustainable Living Association
CSU Center for Environmental Justice	Loveland Power & Water	The Arc of Larimer County
CSU Energy Office	Morning Fresh Dairy	The Family Center / la Familia
CSU Forest Service	Northern Colorado Fireshed Collaborative	The Nature Conservancy
CSU Parking and Transportation Services	Northern Colorado Water	Thompson School District
CSU School of Public Health	Odell Brewing	Town of Estes Park
CSU Student Sustainability Center	Open Lands Advisory Board	Town of Wellington
CSU Water Center	Planning Commission	YMCA of the Rockies